

IS 345

COM1 - in-ceiling installation, sq
 EAN 4007841 079673
 Article number 079673



infrared sensor
360°



max. 20 x 4 m

2000 W

2000 W max. (LED-
ready)



IP20



2 - 1000 lux



5 sec - 15 min



manual override 4h



ideal 2,5 - 5 m

Teach

Teach mode



energy saving

Function description

Huge reach. Infrared motion detector IS 345 for indoors and out, ideal for passageways, corridors and commonly used spaces, installation height 5 m, detection zone 12 x 6 m (radial) and 23 x 6 m (tangential), heavy-duty relay for high switching capacity. Available either in round or square surface-mounted, concealed or In-ceiling installation.

Technical specifications

Dimensions (L x W x H)	121 x 94 x 94 mm	LED lamps > 2 W < 8 W	300 W
Manufacturer's Warranty	5 years	LED lamps > 8 W	600 W
Settings via	Remote control, Potentiometers, Smart Remote	Capacitive load in µF	176 µF
With remote control	No	Sensor Technology	Passive infrared
Version	COM1 - in-ceiling installation, sq	Mounting height	2,50 – 5,00 m
PU1, EAN	4007841079673	Mounting height max.	5,00 m
Type	Motion detectors	Optimum mounting height	2,8 m
Application, place	Indoors	Detection angle	Aisle, 360 °
Application, room	corridor / aisle, multi-storey / underground car park, Indoors	Angle of aperture	45 °
Colour	white	Sneak-by guard	Yes
Colour, RAL	9003	Capability of masking out individual segments	Yes
Includes corner wall mount	No	Electronic scalability	No
Installation site	ceiling	Mechanical scalability	No
Installation	In-ceiling installation, Ceiling	Reach, radial	12 x 6 m (72 m²)
IP-rating	IP20	Reach, tangential	23 x 6 m (138 m²)
Ambient temperature	-20 – 50 °C	Switching zones	280 switching zones

IS 345

COM1 - in-ceiling installation, sq
 EAN 4007841 079673
 Article number 079673



Technical specifications

Material	Plastic
Mains power supply	220 – 240 V / 50 – 60 Hz
Switching output 1, resistive	2000 W
Switching output 1, number of LEDs / fluorescent lamps	8 pcs.
Fluorescent lamps, electronic ballast	1500 W
Fluorescent lamps, uncorrected	1000 VA
Fluorescent lamps, series-corrected	400 VA
Fluorescent lamps, parallel-corrected	400 VA
Switching output 1, low-voltage halogen lamps	2000 VA
LED lamps < 2 W	100 W

Functions	Normal / test mode, Manual ON / ON-OFF
Twilight setting	2 – 1000 lx
Time setting	5 s – 15 Min.
Basic light level function	No
Main light adjustable	No
Twilight setting TEACH	Yes
Constant-lighting control	No
Interconnection	Yes
Type of interconnection	Master/master
Interconnection via	Cable

Accessories

EAN 4007841 009151	Remote control Smart Remote
EAN 4007841 559410	Service remote control RC8
EAN 4007841 056728	Black cover for IR-sensors

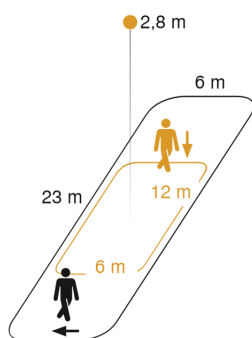
IS 345

COM1 - in-ceiling installation, sq

EAN 4007841 079673

Article number 079673

Detection Zone

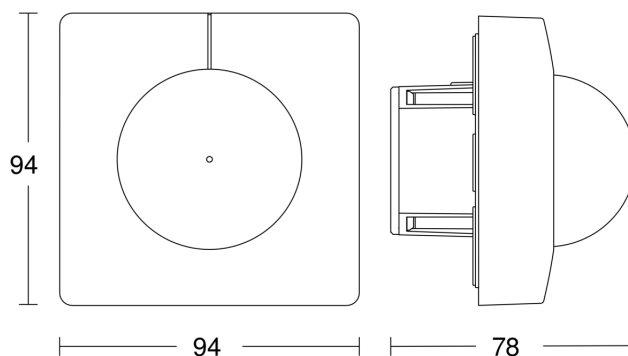


Mögliche Montagehöhe: 2,50 m – 5,00 m

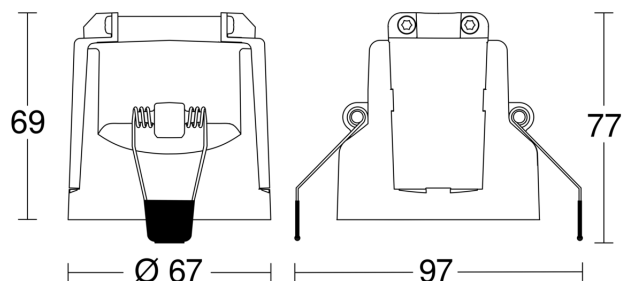
Orange: radial

Schwarz: tangential

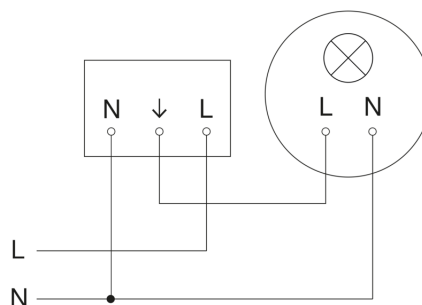
Dimension Drawing 1



Dimension Drawing 2



Master circuit diagram

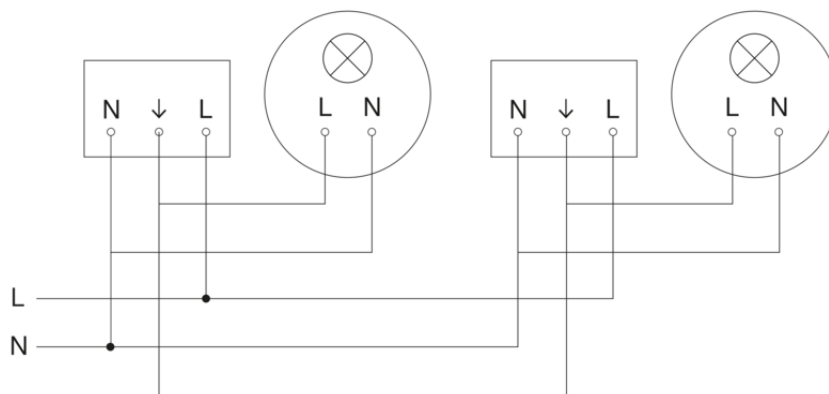


IS 345

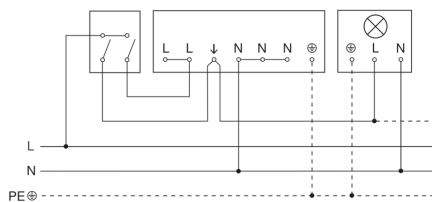
COM1 - in-ceiling installation, sq
EAN 4007841 079673
Article number 079673



Circuit diagram for interconnecting several sensors



Connection using two-circuit switch for manual and automatic operation



Circuit diagram Connection via a changeover switch for continuous and automatic operation

