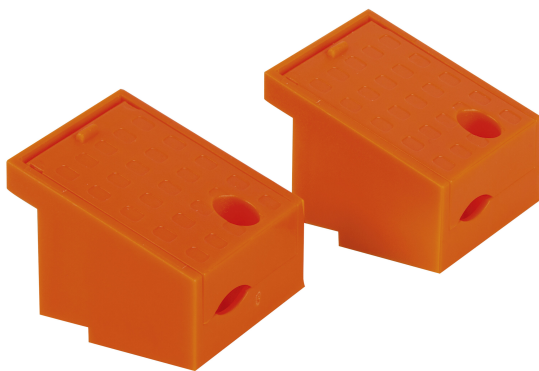


# PRODUCT DATASHEET

## DR AY DS-P-CLAMP DUO

LED DRIVER CABLE CLAMP | Driver accessories kit for LED DRIVER DIP SWITCH / PHASE-CUT



---

### Areas of application

- Downlights, flat luminaires
- Suitable for different cable types
- Suitable for indoor applications

---

### Product benefits

- Simple and quick cable mounting
- Sufficient space for cable connection
- Free cable connection thanks to open flaps

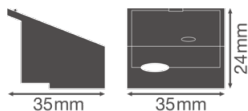
---

### Product features

- Easy to install and flexible cable clamps
- Separate cable clamps for primary and secondary side
- Pre-fixed, captive screws

## TECHNICAL DATA

### Dimensions & Weight



Length	35 mm
Width	35 mm
Height	24 mm
Product weight	9.00 g

### Colors & materials

Product color	Orange
---------------	--------

### Additional product data

Product remark	Available from March 2023
----------------	---------------------------




### Capabilities

Dimmable	No
----------	----

## EQUIPMENT / ACCESSORIES

- DR AY DS-P -CLAMP DUO suitable for LED DRIVER DIP SWITCH P
- DR AY DS-PFM -CLAMP DUO suitable for LED DRIVER DIP SWITCH PFM
- DR AY PC-PFM-CLAMP DUO suitable for LED DRIVER PHASE-CUT PFM

## DOWNLOAD DATA

DOWNLOAD DATA	
	User instruction
	PRODUCT DATASHEET
	Declarations Of Conformity CE

## LOGISTICAL DATA

Product code	Packaging unit (Pieces/Unit)	Dimensions (length x width x height)	Gross weight	Volume
4099854077937	BAG 2	150 mm x 105 mm x 30 mm	19.00 g	0.47 dm <sup>3</sup>
4099854077944	Shipping box 20	242 mm x 82 mm x 49 mm	227.00 g	0.97 dm <sup>3</sup>
4099854077951	Shipping box 80	260 mm x 182 mm x 127 mm	1095.00 g	6.01 dm <sup>3</sup>

The mentioned product code describes the smallest quantity unit which can be ordered. One shipping unit can contain one or more single products. When placing an order, for the quantity please enter single or multiples of a shipping unit.

DISCLAIMER

Subject to change without notice. Errors and omission excepted. Always make sure to use the most recent release.