

SYLVANIA



The affordable visual comfort

START Panel Eco

START Panel Eco family is an economical range of recessed LED panels for general indoor lighting applications such as breakout areas, offices and meeting rooms. They can be also installed surface mounted and suspended with the available accessories.

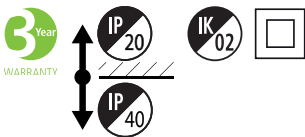
This range includes UGR19 or UGR22 versions in size of 600x600mm.

The optical design ensures a consistent uniform output throughout the luminaire creating a comforting, and soft light source.



sylvania-lighting.com

START Panel Eco



Features

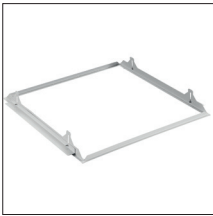
- 600x600mm module to meet the most common installation need
- Microprismatic diffuser for low glare and low UGR19 value or Opal diffuser to achieve a wide beam and provides an even and diffused lighting
- Slim size 31mm maximum (with driver 56mm)
- Available in Warm White (3000K), Neutral White (4000K) and Cool White (6500K)
- An economic version with efficacy of 110lm/W
- Delivers up to 3200 lumen
- Meets IP40 degree of protection from the front and IK02 degree of impact resistance
- Tp(b) rated diffuser that may not burn at a speed of more than 50mm per minute
- Long lifespan: 100.000 hours at 70% of the original output
- SDCM<5
- Loop-in-Loop-out (LILO) box added as an option for easy installation
- Safety cables (2 pieces) as additional parts in the package
- Quick connector between the driver and the panel

Product information

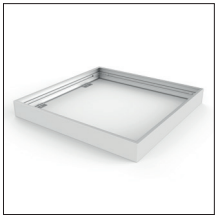
Code	Description	Correlated Colour Temp (K)	Total Power Consumption (W)	Fixture Lumen (lm)	Luminaire efficacy (lm/W)	Glare Control	Nominal Product Height (mm)	Nominal Product Length (mm)	Nominal Product Width (mm)	Mains voltage (V)
START Panel Eco										
0044622	START Panel Eco UGR19 600x600 3200lm 840	4000	29	3200	110	<19	31	595	595	220-240
0044623	START Panel Eco 600x600 3200lm 830	3000	29	3200	110	<22	31	595	595	220-240
0044624	START Panel Eco 600x600 3200lm 840	4000	29	3200	110	<22	31	595	595	220-240
0044625	START Panel Eco 600x600 3200lm 865	6500	29	3200	110	<22	31	595	595	220-240

Accessories

Code	Description
0047416	Plasterboard Ceiling Frame 600x600
0047197	Surface Mounting Kit 600x600x70mm

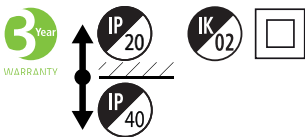


0047416

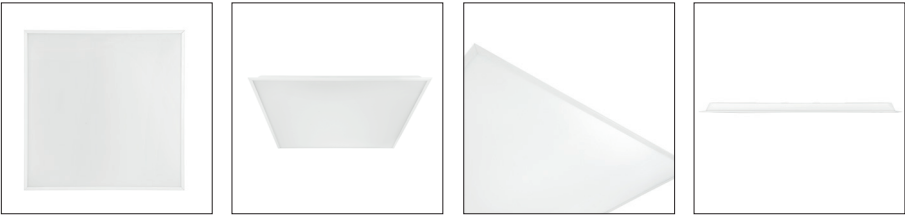


0047197

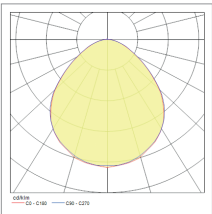
START Panel Eco



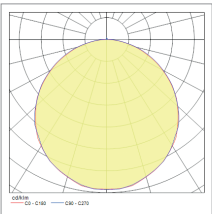
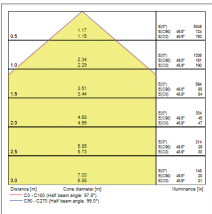
Additional Images



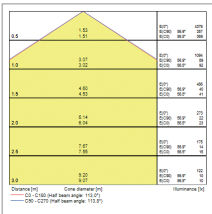
Photometric Data



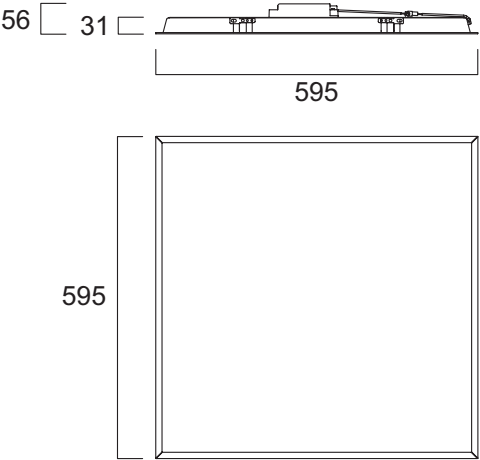
UGR19



UGR22



Dimensions (mm)



SYLVANIA



Although every effort has been made to ensure accuracy in the compilation of the technical detail within this publication, specifications and performance data are constantly changing. Current details should therefore be checked with Feilo Sylvania International Group Kft.

Copyright Feilo Sylvania International Group Kft. October 2023

sylvania-lighting.com

A Feilo Sylvania Company