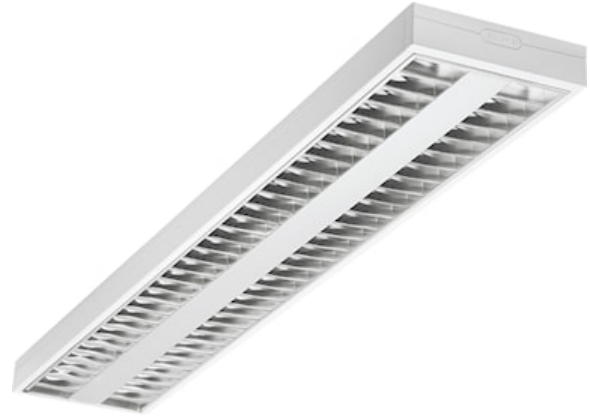
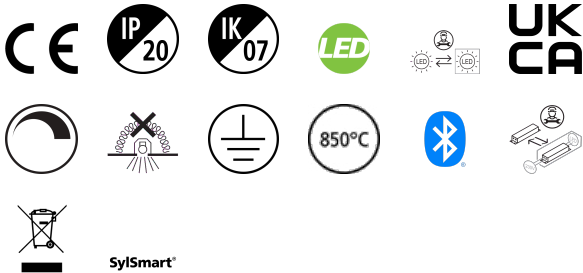


# RANA NEO 9500LM S 1500 840 SSC 2L WHITE

Code article 0054263

**SYLVANIA**

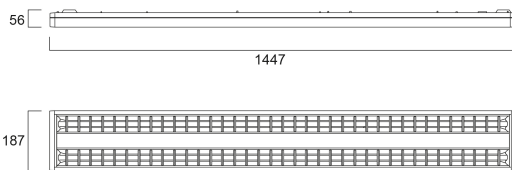
**PRO**<sup>TM</sup>



Surface or Suspended LED luminaire with Micro Prismatic Optic, Direct Light Distribution, Luminaire Dimensions: 1447x187x56mm, White body colour, IP20, IK07, SylSmart Standalone capable, Low LED flicker (+/-5%), Neutral White (4000K) LED Colour Temperature, 9500lm, 71W, 133lm/W efficacy, CRI>80, 3 SDCM (3-step MacAdam ellipse) LED Colour Consistency, UGR<17, Luminance at 65° < 3000 cd/m<sup>2</sup>, Lifespan: 96,000 hours L80B20, Quick electrical connection with push-connectors in the luminaire, Glow Wire Test 850°C.

## Atouts techniques

### Dimensions (mm)

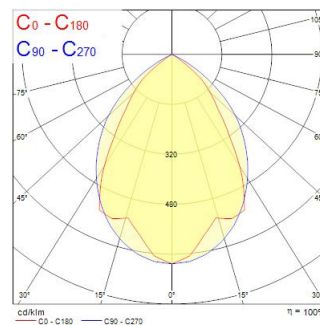


### Photométrie

0.5	0.90 0.66	E171 E180 E190	2545 570 758
1.0	1.79 1.37	E171 E180 E190	671 131 178
1.5	2.68 2.05	E171 E180 E190	232 88 90
2.0	3.59 2.74	E171 E180 E190	159 59 60
2.5	4.49 3.42	E171 E180 E190	129 51 58
3.0	5.38 4.11	E171 E180 E190	109 48 50

Distance [m]      Cone diameter [m]      Illuminance [lx]

— C0 - C180 (Half beam angle: 69.9°)  
— C90 - C270 (Half beam angle: 83.8°)



# RANA NEO 9500LM S 1500 840 SSC 2L WHITE

Code article 0054263

**SYLVANIA**

## Données générales

Nom du produit	RANA NEO 9500LM S 1500 840 SSC 2L WHITE
Technologie	LED
Cap/Base	N/A
Housing	Steel
Montage	Ceiling surface mounting, Suspended
General application	Education, Office
Operating temperature range (°C)	0°C...+25°C
Performance ambient temperature Tq (°C)	25
Virtual assistant compatibility	N/A
ETIM Class	EC002892
Warranty	5 ans

## Données optiques

Fixture luminous flux (lm)	9500
Luminaire efficacy (lm/W)	134
Température de couleur (K)	4000
Couleur de lumière	Neutral White
IRC (Ra)	80
Colour Variation Initial (SDCM)	SDCM3
Glare control	< 17
Photobiological Risk Group	RG0

## Caractéristiques électriques

Consommation électrique totale (W)	76
Primary Supply/Product voltage - min (V)	198.0
Primary Supply/Product voltage - max (V)	264.0
Lamp power factor	0.95
Electrical protection	Class I
Control gear required	No
Type d'appareillage	LED driver constant current
Dimmable	Yes
Dimming method	SylSmart Standalone (SSC)
Drive current (mA)	300
Courant d'appel (A)	29
Inrush Duration (µs)	180
Energy Efficiency Class (A->G) of contained light source	C, C(more than 1 Light Source)
Nominal Frequency (Hz)	50/60Hz
LED Flickering Rate	Ultra low (5% or less)
Max. products per 10A C Breaker	21
Max. products per 13A C Breaker	28
Max. products per 16A C Breaker	36
Max. products per 20A C Breaker	45
Max. products per 10A B Breaker	13
Max. products per 13A B Breaker	17
Max. products per 16A B Breaker	22
Max. products per 20A B Breaker	27

## Durée de vie

Lifespan L70 B50	100000
Lifespan L80 B20	96000

# RANA NEO 9500LM S 1500 840 SSC 2L WHITE

Code article 0054263

**SYLVANIA**

## Données physiques

Housing colour	RAL 9016 - Traffic white / Bezel
IP rating	IP20
IK rating	IK07
Diffuser finish	Opal
Diffuser material	PC Polycarbonate
Longueur (mm)	1440
Largeur (mm)	187
Nominal Product Height (mm)	47
Poids (kg)	3.9

## Emballage

Product EAN number	5410288542638
Longueur simple de l'emballage (cm)	153.5
Largeur simple de l'emballage (cm)	6.5
Packaging single depth (cm)	21.0
DUN14 (inner)	05410288542638
Units per outer package	1
Packaging outer length / height (cm)	153.5
Packaging outer width (cm)	6.5
Packaging outer depth (cm)	21.0

## Sécurité

Glow Wire Test (°C)	850
---------------------	-----