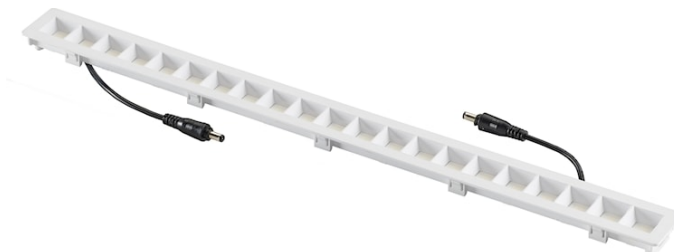


OPTICLIP LIGHT E 830 2DC WH

Code article 0044038

SYLVANIA

PROTM



OPTICLIP LIGHT E 830 2DC WH LED light module with reflector, assembled with 2DC connectors, 200-450mA drive current, up to 1900lm flux @450mA drive current, CRI80, 3000K, SDCM≤3

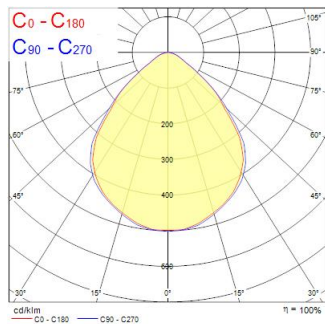
Atouts techniques

Photométrie

| Distance [m] | Cone diameter [m] | Beam diameter [m] | Beam diameter [m] | Illuminance [lx] |
|--------------|-------------------|-------------------|-------------------|------------------|
| 0.5 | 0.99 0.95 | S10° | 233 | 233 |
| | | E1C90 | 447° | 277 |
| | | E1C90 | 438° | 301 |
| 1.0 | 1.98 1.90 | S10° | 469 | 469 |
| | | E1C90 | 447° | 119 |
| | | E1C90 | 438° | 135 |
| 1.5 | 2.97 2.85 | S10° | 230 | 230 |
| | | E1C90 | 447° | 83 |
| | | E1C90 | 438° | 95 |
| 2.0 | 3.96 3.81 | S10° | 185 | 185 |
| | | E1C90 | 447° | 20 |
| | | E1C90 | 438° | 21 |
| 2.5 | 4.95 4.76 | S10° | 105 | 105 |
| | | E1C90 | 447° | 19 |
| | | E1C90 | 438° | 20 |
| 3.0 | 5.94 5.71 | S10° | 73 | 73 |
| | | E1C90 | 447° | 13 |
| | | E1C90 | 438° | 14 |

Distance [m] Cone diameter [m] Illuminance [lx]

— C0 - C180 (Half beam angle: 87.2°)
— C90 - C270 (Half beam angle: 89.4°)



OPTICLIP LIGHT E 830 2DC WH

Code article 0044038

SYLVANIA

Données générales

| | |
|---|-----------------------------|
| Nom du produit | OPTICLIP LIGHT E 830 2DC WH |
| Technologie | LED |
| Cap/Base | N/A |
| Montage | Ceiling recessed mounting |
| General application | Education, Office |
| Operating temperature range (°C) | -20°C...+40°C |
| Performance ambient temperature Tq (°C) | 25 |
| Virtual assistant compatibility | N/A |
| ETIM Class | EC000996 |
| Warranty | 5 ans |

Données optiques

| | |
|---------------------------------|------------|
| Fixture luminous flux (lm) | 1900 |
| Température de couleur (K) | 3000 |
| Couleur de lumière | Warm White |
| IRC (Ra) | 80 |
| Colour Variation Initial (SDCM) | SDCM5 |
| Luminous Intensity (cd) | 1010 |
| Beam Angle (°) | 80 |
| Distribution type | Symmetric |
| Photobiological Risk Group | RG1 |

Caractéristiques électriques

| | |
|--|-----------------------------|
| Consommation électrique totale (W) | 15 |
| Primary Supply/Product voltage - min (V) | 33 |
| Primary Supply/Product voltage - max (V) | 38 |
| Electrical protection | Class III |
| Control gear required | Yes |
| Type d'appareillage | LED driver constant current |
| Dimmable | No |
| Dimming method | N/A |
| Min. drive current (mA) | 200 |
| Max. drive current (mA) | 450 |
| Drive current - Range (mA) | 200mA / 450mA |
| Energy Efficiency Class (A->G) of contained light source | E |
| Nominal Frequency (Hz) | N/A |

Durée de vie

| | |
|------------------|--------|
| Lifespan L70 B50 | 100000 |
| Lifespan L70 B20 | 100000 |
| Lifespan L80 B50 | 100000 |
| Lifespan L80 B20 | 100000 |
| Lifespan L80 B10 | 80000 |
| Lifespan L90 B50 | 70000 |
| Lifespan L90 B20 | 60000 |
| Lifespan L90 B10 | 60000 |

Données physiques

| | |
|-----------------------------|----------------|
| IP rating | IP20 |
| IK rating | IK07 |
| Finition réflecteur | Not Applicable |
| Longueur (mm) | 490 |
| Largeur (mm) | 39 |
| Nominal Product Height (mm) | 14 |
| Poids (kg) | 0.23 |

OPTICLIP LIGHT E 830 2DC WH

Code article 0044038

SYLVANIA

Emballage

| | |
|--------------------------------------|----------------|
| Product EAN number | 5410288440385 |
| Longueur simple de l'emballage (cm) | 65.0 |
| Largeur simple de l'emballage (cm) | 7.0 |
| Packaging single depth (cm) | 3.0 |
| DUN14 (inner) | 15410288440382 |
| Units per outer package | 30 |
| Packaging outer length / height (cm) | 57.0 |
| Packaging outer width (cm) | 32.0 |
| Packaging outer depth (cm) | 24.0 |

Sécurité

| | |
|---|--------|
| Glow Wire Test (°C) | 650 |
| Condition de fonctionnement optimal (° C) | -20-40 |
| Utilisation pour applications sèches uniquement | No |